



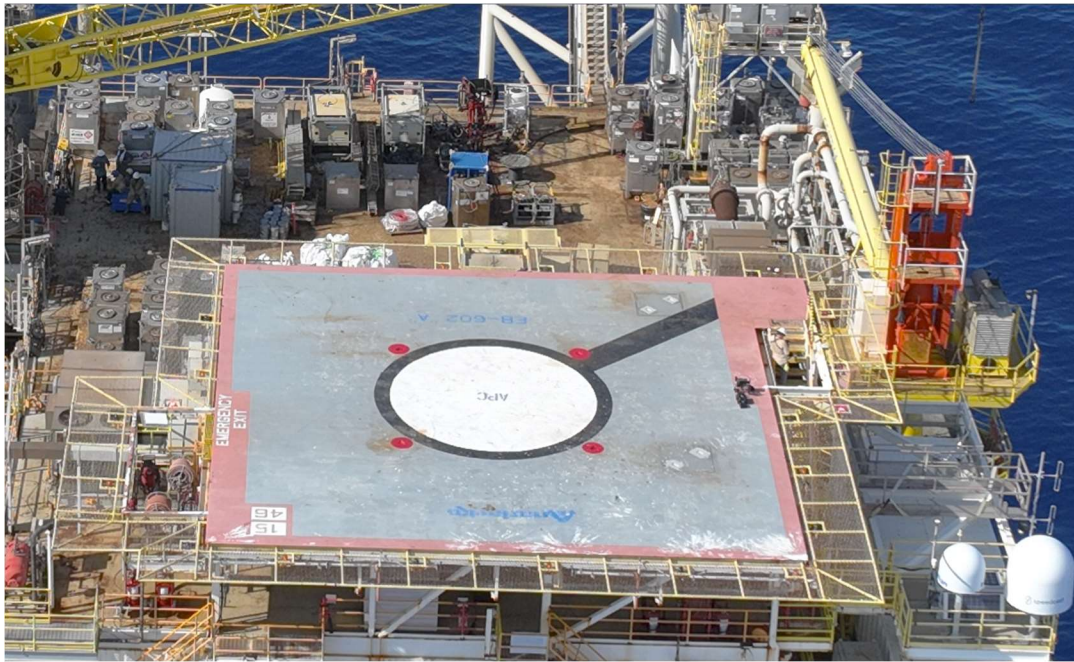


HELIDECK INFORMATION PLATE

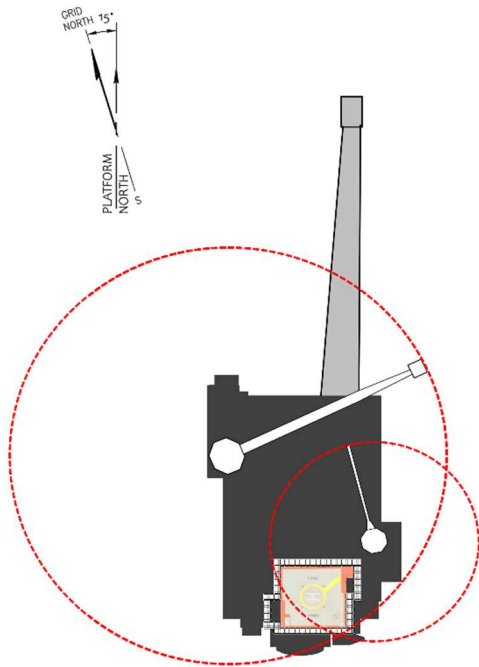
1. Operating Company Logo 		2. Position <p style="text-align: center;">27° 22.1166' N 94° 28.0668' W</p>		3. Location Name <p style="text-align: center; font-size: 1.5em;">NANSEN</p>			
5. Operating Company <p style="text-align: center;">Anadarko US Offshore LLC</p>		6. Helideck D-Value <p style="text-align: center;">46 ft / 14m</p>		7. Helideck Elevation <p style="text-align: center;">175 ft / 53m</p>		8. Lease Block Number <p style="text-align: center;">EB 602</p>	
9. VHF Radio Frequency <p style="text-align: center;">123.05 MHz</p>		10. Helideck Dimensions <p style="text-align: center;">46 x 46ft / 14 x 14m</p>		11. Max Allowable Mass <p style="text-align: center;">15 / 6.8t</p>		12. Region <p style="text-align: center;">Gulf of Mexico</p>	
13. Limitations <ul style="list-style-type: none"> Use caution with placement of tail rotor due to fuel station. 5:1 OFDS infringements on west, east, and south sides of helideck. 				14. TDPM/Aiming Circle <input checked="" type="checkbox"/> Yes <input type="checkbox"/> No <input type="checkbox"/> Displaced 0.1D		15. Weather/ATIS/AWOS ID: TEL: FREQ: <p style="text-align: center;">No Weather Station on site</p>	
17. Remarks <ul style="list-style-type: none"> 20 minute and 5 minutes out calls are required. Secondary radio Marine 88 (157.425 MHz) 				18. Services Helicopter Refueling: Yes Helicopter Starter Equipment: No Helicopter Towing Equipment: No Helideck Status Lights: Yes			
19. Installation Pictures <div style="display: flex; justify-content: space-around;">    </div>							
20. Deviations from CAP437 or HSAC RPs <ul style="list-style-type: none"> No chevron marking on helideck. 				21. Parking Area Information Type None D-Value Dimensions Max. Allowable Mass Procedures			
22. NDB Frequency <p style="text-align: center;">None</p>		23. NDB Call Sign <p style="text-align: center;">N/A</p>		24. Issue Date <p style="text-align: center;">01/OCT/24</p>		25. Revision Number <p style="text-align: center;">Rev 002</p>	

HELIDECK INFORMATION PLATE

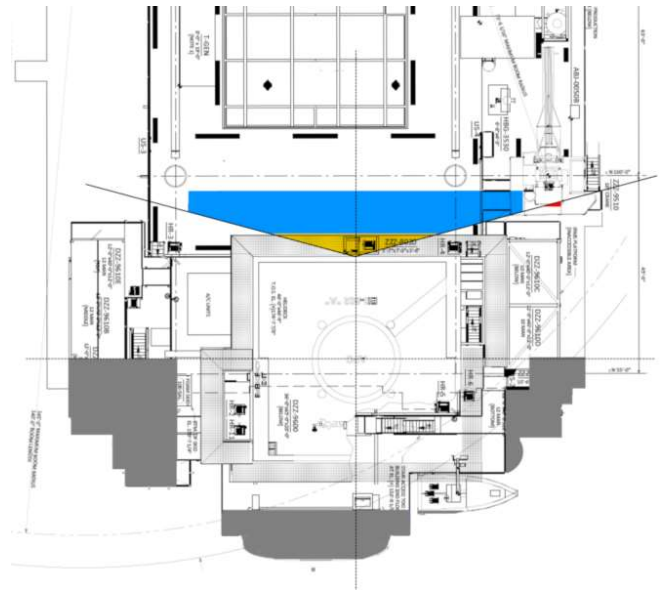
26. Helideck Picture



27. Platform Schematic



5:1 OFDS infringements shaded in dark grey.
D46 OFS infringement in red



28. Additional Information

29. Link to NOTAM Website

n/a

30. Helideck Contact Telephone Number

(832) 636-9170 / (832) 636-9173